



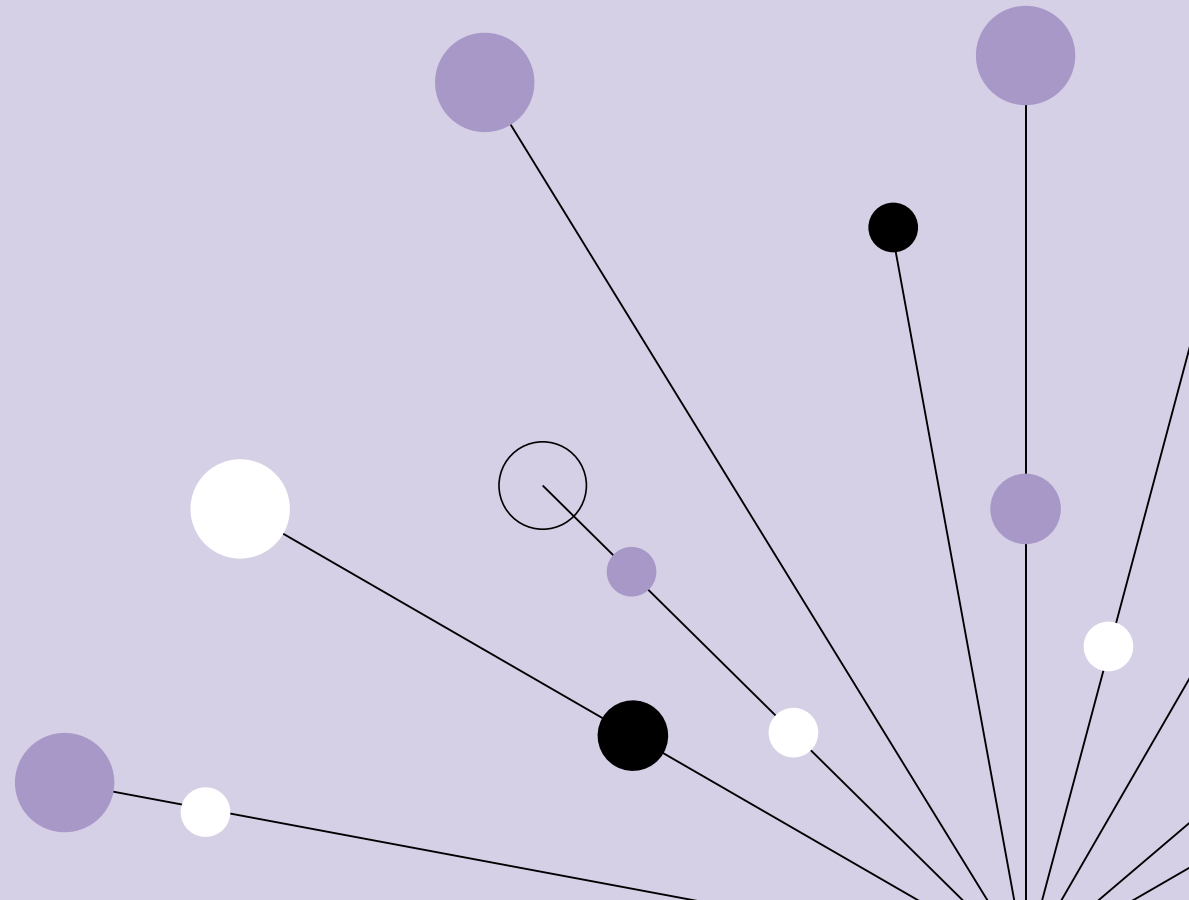
In partnership with
 **Northumbria
University**
NEWCASTLE

Apprenticeships England

BSc (Hons) Project Management

Degree Apprenticeship
Programme Guide

QA.com





Why QA?

Endorsed by 4,000+ global clients, we are the leader in applied and cohort-based learning academies.

Today's biggest technological shifts are shaped by AI, cloud, and data.

In every technology revolution, there are winners and losers – and teams with applied skills make all the difference. We believe you can't change an organisation unless you change the capabilities of its people and ensure human and machine intelligence work together.

Success in numbers:

40+

Years of training
experience

80+

Project management
courses

50,000+

Careers launched
& accelerated

£500M+

Levy spend
invested

1,000+

AI, cloud & coding
hands-on labs

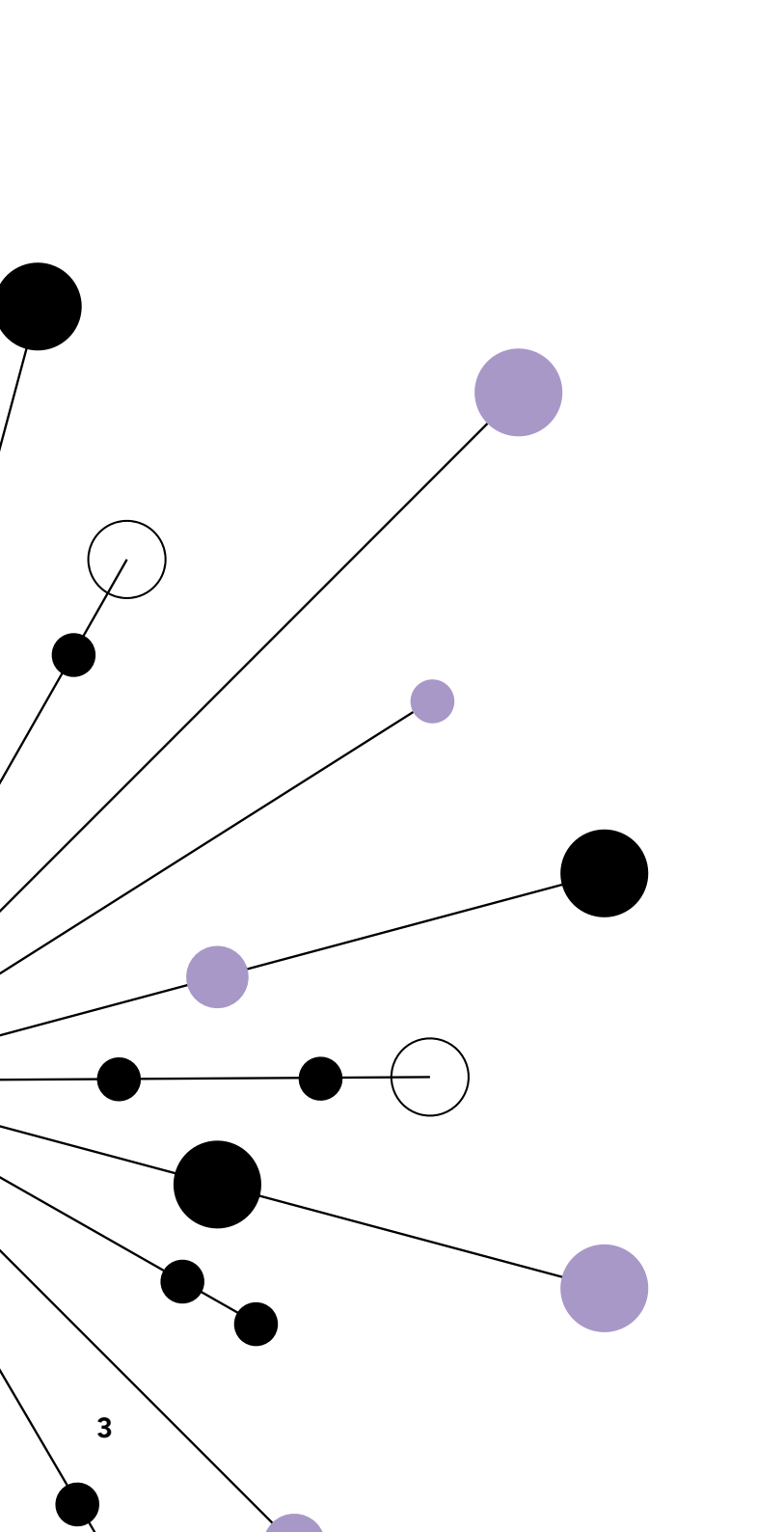
4

Specialist learning
pathways in BSc



Ready to explore how QA can support you?

Let's dive in!



Contents

Creating Change	04
Digital by Design	05
Programme Overview	06
Learner Journey	07
Modules	10
Tools and Technologies	15
End-Point Assessment	16

Creating Change

Shape the future of project delivery.

This programme develops adaptable professionals to drive business impact through strategic, technology-enabled project leadership.

It builds project expertise in planning, governance, and stakeholder engagement to drive change, manage risk, and deliver data-driven value.

By fostering critical thinking, AI literacy, collaboration, and ethical leadership, it strengthens teams to execute with impact and confidence.

Our degree apprenticeships drive business results by enabling organisations to apply skills quickly, consistently, and at scale.



Future-Focused

Harness AI and data science insights to lead future-ready projects.



Real-World Application

Apply tools, frameworks, and leadership skills directly to live projects.

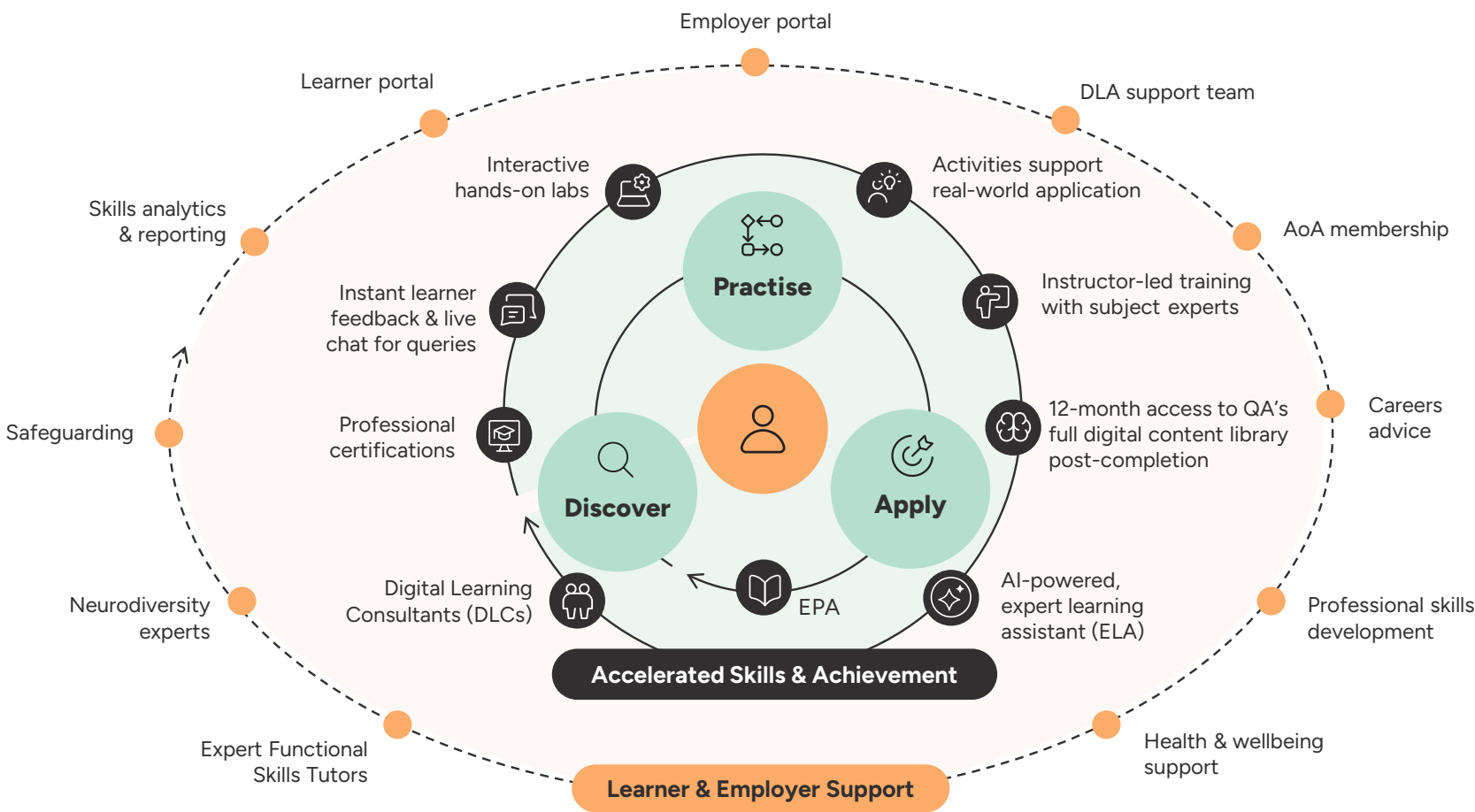


Professional Recognition

APM-aligned credentials offering MAPM eligibility and a clear path to chartered status.

Digital by Design

Our market-leading approach accelerates skill development by integrating technical study, academic learning, and on-the-job experience – ensuring **holistic** support for both learners and employers.



Discover

Leveraging QA’s learning platform, learners follow a development path focused on their job role.



Practise

Learners join instructor-led sessions, practise skills in hands-on, risk-free labs, and collaborate with peers.



Apply

Learnings are applied on the job through work-based activities at key stages, supported and reviewed by specialist skills coaches.

Programme Overview



Details of standard: BSc (Hons) Project Management



In partnership with
Northumbria University
NEWCASTLE



Total cost:

Level 4, 5 + 6

£24,900

Level 5 + 6

£17,900



Programme duration:

44 months

26 months



Live instructor sessions:

36 days

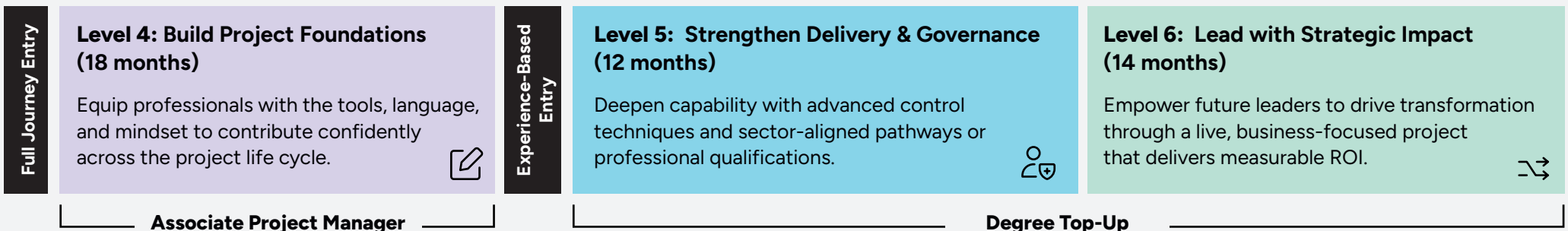
25 days

"Built for real-world impact, this APM-aligned programme equips project professionals with the skills to lead transformation by harnessing AI, data, and strategic leadership."

Dr Barry Gledson,

Associate Professor, School of Engineering and Environment,
Northumbria University

The Project Management Degree Route



Learner Journey

Aligned with the Association for Project Management (APM) Body of Knowledge to develop project leaders.

This degree apprenticeship integrates live and online workshops with self-paced learning, employing a guided discovery approach for individual learner contexts.

It uses research-informed methods to help learners translate theoretical knowledge into practical skills.

Learners are assigned a Digital Learning Consultant (DLC) for personalised coaching and support. These specialists ensure their successful progress, wellbeing, and readiness for assessments.

ACE Team

Our Academic Community of Excellence (ACE) team support learners with writing styles, reading strategies, referencing, and more.

Office Hours

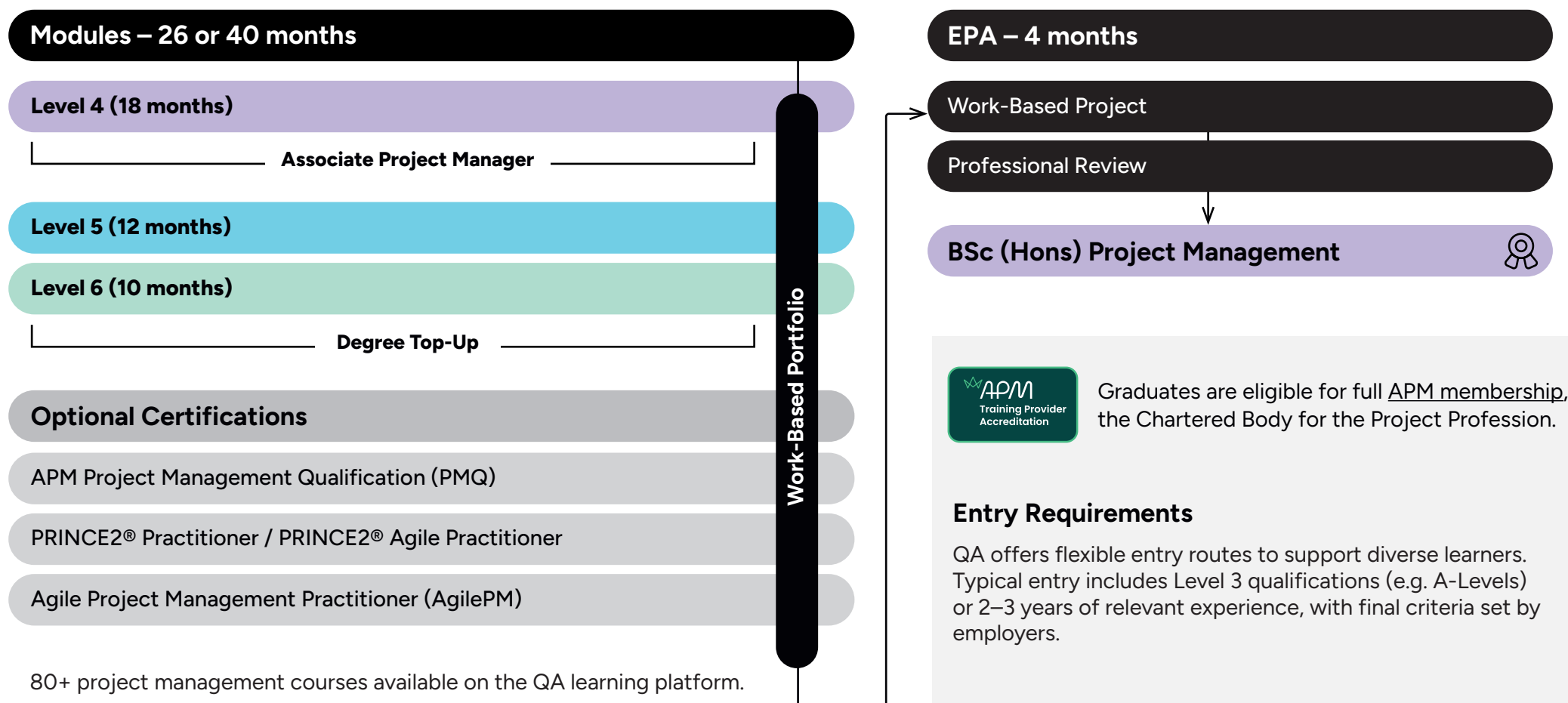
Personalised time with tutors to discuss course material, assignments, and academic guidance.



Learners can access Northumbria University Library – all essential and recommended readings are provided free of charge as e-books.



Enhance the learner journey with industry-recognised certifications, vendor training, and access to the QA learning platform.



Recognition of Prior Learning (RPL)

Fast-track development for experienced professionals. Northumbria University assesses prior experience to tailor learning and accelerate programme completion.

Learners can enter Level 5 directly with:

- 4+ years' project experience and a practitioner qualification
- or completion of the Project Manager Level 4 apprenticeship.

Module Key: ☐ Fixed ☒ Subject to Rotation

Level 4

Level 5

Level 6

Learners with 4+ years of project experience and relevant certification fast-track to Level 5 for accelerated degree progression.

Module 1: Project Management 101 (5 weeks) ☐

Module 2: Stakeholder Management (4 weeks) ☐

Module 3: Concept & Business Case (5 weeks) ☐

Module 4: Project Finances (5 weeks) ☐

Module 5: Project Planning (5 weeks) ☐

Module 6: Digital Tools & Technology (2 weeks) ☐

Module 7: Risk & Issue Management (4 weeks) ☐

Module 8: Project Monitoring & Quality (6 weeks) ☐

Module 9: Management & Leadership (5 weeks) ☐

Module 10: ProjectXperience (1 week) ☐

PM4 Qualification Award



Module 1: Sourcing & Sustaining Project Resources (10 weeks) ☐

Module 2: Project Governance & Financial Control (10 weeks) ☐

Module 3: Engaging Stakeholders through Technology Driven Approaches (10 weeks) ☒

Module 4: *Specialist Pathway (10 weeks) ☒

*Specialist Pathways

1 Pathway 1:
Project Methodologies & Professional Practice

2 Pathway 2:
IT Project Management

3 Pathway 3:
Public Sector Project Management

4 Pathway 4:
Infrastructure Project Management

Learners without an intermediary professional qualification must fulfill EPA requirements by earning a certification through the "Project Methodologies & Professional Practice" module. Those already qualified have the option to specialise further in IT, Public Sector, or Infrastructure focused pathways.

Module 1: Leading Change through Emerging Technologies & Approaches (10 weeks) ☐

Module 2: Sustainable Strategy in the Business Environment (10 weeks) ☐

Module 3: Generating Organisational Change (10 weeks) ☐

EPA: Work-Based Project & Professional Review (20 weeks) ☐



Modules – Level 5

All modules are core with one specialist pathway – each worth 30 credits.

01

Module 1:

Sourcing & Sustaining Project Resources

Develops critical knowledge and practical skills in strategic procurement and contract management, enabling effective oversight of supplier portfolios and maximising value through robust contract practices.

Emphasises ethical, sustainable resource management and navigating environmental constraints to support long-term organisational success.

Topics:

- Foundations of Procurement
- Procurement Strategy & Sustainability
- Supplier Selection & Technology
- Contracts, Pricing & Payment Terms
- Contract Negotiation
- Managing Customer–Supplier Relationships
- Risk, Regulation & Legal Considerations
- Reflection, Impact & Future Focus

Live Instructor Sessions: 4 Days
(8 x 3-Hour Workshops)

02

Module 2:

Project Governance & Financial Control

Examines governance frameworks, financial controls, and quality management to align projects with strategic objectives, ensuring robust oversight, value delivery, and continuous improvement.

Topics:

- Financial Tools & Techniques
- Financial Tracking & Project Methodologies
- Organisational Governance Structures
- Portfolio, Programme & Project Management
- Quality Planning & Assurance
- Quality Control Processes
- Continuous Improvement
- Risk & Compliance in Governance

Live Instructor Sessions: 4 Days
(8 x 3-Hour Workshops)

03

Module 3:

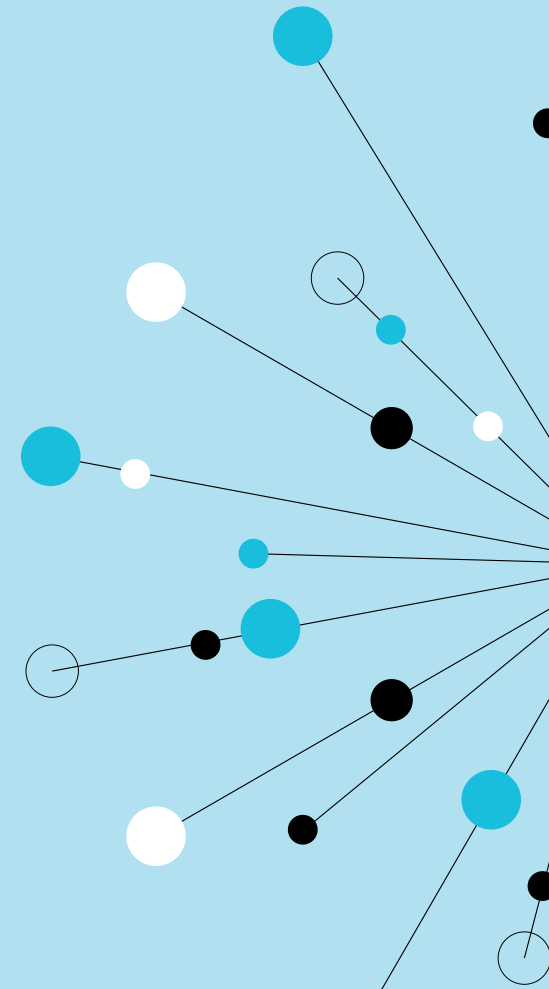
Engaging Stakeholders through Technology Driven Approaches

Enhances stakeholder engagement using communication theories and technology to manage influence, expectations, and information flow for improved project outcomes.

Topics:

- Stakeholder Identification & Mapping
- Power & Interest Modelling
- Managing Internal & External Stakeholders
- Effective Project Communication
- Fundamentals of Information Management
- Information Management Strategies
- Data Analysis Tools & Techniques
- Information Visualisation for Decision Support

Live Instructor Sessions: 4 Days
(8 x 3-Hour Workshops)



1 **Pathway 1:** Project Methodologies & Professional Practice

Introduces leading project methodologies and professional bodies – with preparation for an intermediary qualification. Covers content specific to the selected certification's lifecycle, tools, and assessment.

Topics:

- Evolution of Project Management
- Key Professional Bodies
- Industry Methodologies & Approaches Overview
- Overview of the Selected Methodology
- Methodology Lifecycle
- Core Processes & Tools
- Review of Key Concepts
- Professional Qualification Assessment

2 **Pathway 2:** IT Project Management

Examines project delivery in IT and digital contexts, focusing on agile frameworks, business analysis, service transition, and managing complex, technology-driven organisational change and innovation.

Topics:

- Evolution of Project Management
- Key Professional Bodies
- Industry Methodologies & Approaches Overview
- Agile PM Management, DSDM & RAD Approaches
- Business Process Modelling & Techniques
- Data Modelling
- Use Cases
- Requirements Engineering

3 **Pathway 3:** Public Sector Project Management

Explores public sector complexity, covering funding models, policy frameworks, and assurance tools like the Green Book and GovS 002 – for accountable, effective project delivery.

Topics:

- Evolution of Project Management
- Key Professional Bodies
- Industry Methodologies & Approaches Overview
- HM Treasury Green Book Guidance
- Public Sector Funding & Finance Models
- Five-Case Business Case Model
- Local Government Approaches to Delivery
- Government Functional Standard (GovS 002) & Project Examples

4 **Pathway 4:** Infrastructure Project Management

Focuses on managing construction and business infrastructure projects, covering key methodologies, contract frameworks, planning, and approval processes to deliver successful outcomes.

Topics:

- Evolution of Project Management
- Key Professional Bodies
- Industry Methodologies & Approaches Overview
- Infrastructure & Infrastructure Project Management
- Planning, Approvals & Institute of Civil Engineers
- NEC & Other Contract Frameworks
- Schedule Management
- Examples Projects & Case Studies



Modules – Level 6

All modules are core – Module 1 is 20 credits, EPA is 40 credits, and others are 30 credits.

01

Module 1:

Leading Change through Emerging Technologies & Approaches

Explores critical emerging technologies and strategic change frameworks for navigating rapid organisational transformation.

Focuses on digital transformation, AI, ML, BIM, big data, IoT, and cybersecurity – alongside post-pandemic dynamics, ethical challenges, geopolitical disruption, and sustainability – to equip project leaders with resilient, forward-looking change strategies.

Topics:

- Introduction to Change
- Emerging Technologies in Project Management
- Evolving Business Processes & Change
- Influencing Sustainable Trends & Behaviours
- The Working Practice Revolution

Live Instructor Sessions: 3 Days
(6 x 3-Hour Workshops)

02

Module 2:

Sustainable Strategy in the Business Environment

Covers strategic tools, sustainability principles, and business environment analysis to align programmes and projects with organisational goals, long-term value, and responsible global growth.

Topics:

- External Environment: Macro, Industry & Market Forces
- Strategic Choices for Programmes, Projects & Organisations
- Strategic Alignment with CSR & Ethics
- Sustainability in Project Planning & Delivery
- Ethical, Legal & Regulatory Considerations
- Global Forces, Future Trends & Internationalisation

Live Instructor Sessions: 3 Days
(6 x 3-Hour Workshops)

03

Module 3:

Generating Organisational Change

Examines strategic frameworks for enabling organisational change and transformation through risk-managed, ethically governed delivery across portfolios, programmes, and projects aligned to enterprise goals.

Topics:

- Change Management Models & Implementation
- Overcoming Resistance to Change
- Legal, Ethical & Regulatory Considerations
- Organisational Change via Portfolios, Programmes & Projects
- P3 Management Office & MSP Blueprint
- Strategy Alignment & Transition to BAU
- Risk Identification, Assessment & Planning

Live Instructor Sessions: 3 Days
(6 x 3-Hour Workshops)

04

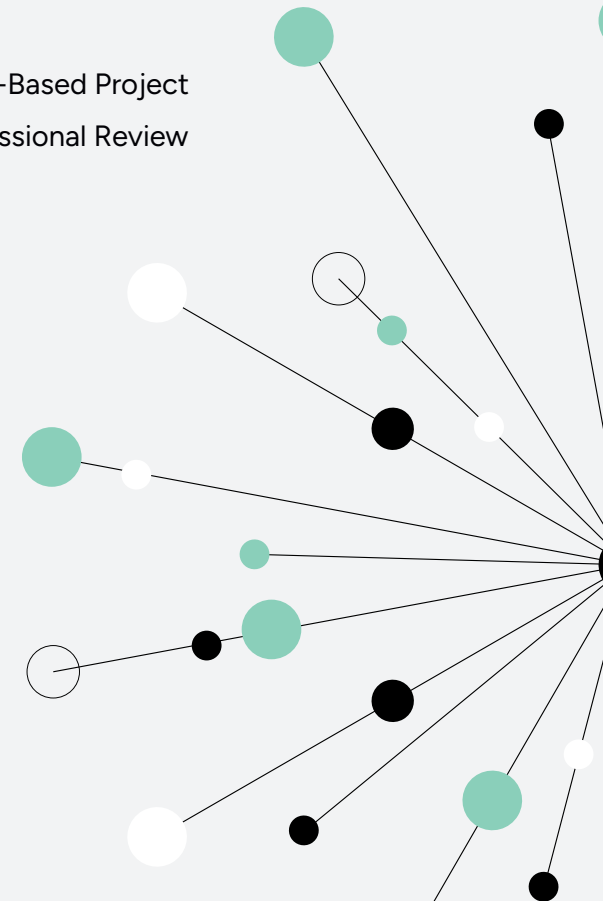
End-Point Assessment:

Work-Based Project & Professional Review

Assess project management competence through a work-based project report and portfolio, evaluated via formal presentation and professional interview.

Topics:

- Work-Based Project
- Professional Review



Tools and Technologies

This programme explores business tools, methods, and frameworks across the following areas:

Business Environment

- PESTLE Analysis
- SWOT Analysis
- Porter's Five Forces
- Value Chain Models (Network & Shop)

Technology in Projects

- AI tools (e.g. ChatGPT, Microsoft Copilot)
- Digital Collaboration Tools

Methods & Planning

- PRINCE2®
- AgilePM®
- MSP® (Managing Successful Programmes)
- MSP Blueprint
- Critical Path Method
- WBS & PBS (Work and Product Breakdown Structures)
- P3O® (Portfolio, Programme & Project Offices)

Finance & Value

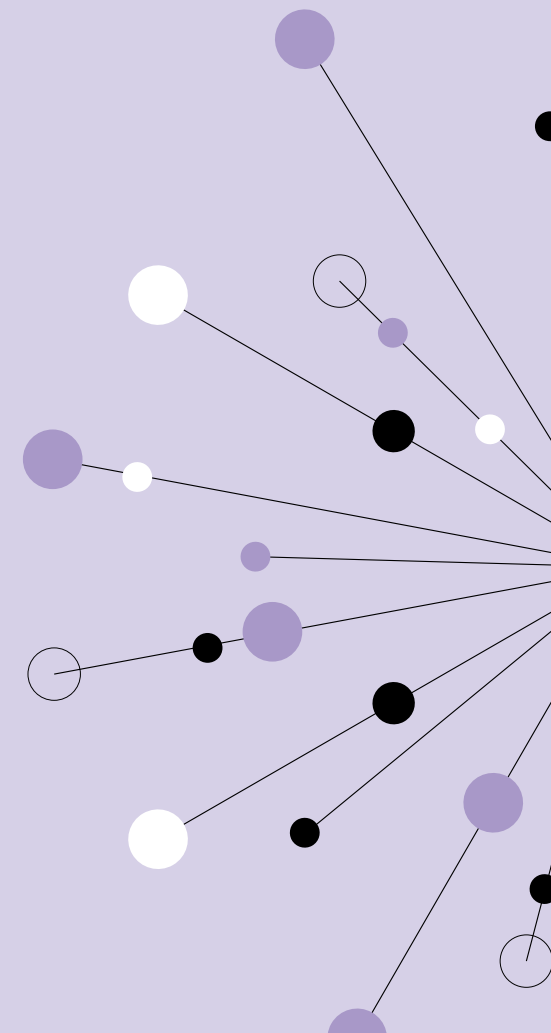
- Investment Appraisal
- Net Present Value (NPV)
- Internal Rate of Return (IRR)
- Earned Value Management (EVM)

People & Leadership

- Kotter's Change Leadership
- Negotiation Skills
- Belbin Team Roles

Quality Management

- Total Quality Management (TQM)
- ISO 9000 Standards
- EFQM (European Foundation for Quality Management)
- Seven Quality Control Tools



End-Point Assessment

We ensure all learners are fully prepared for their End-Point Assessment (EPA) through our internal gateway process, maximising their success rates.

Assessment criteria:

01

Knowledge

Ability to convey knowledge effectively.

02

Skills

Demonstrate practical skills with confidence.

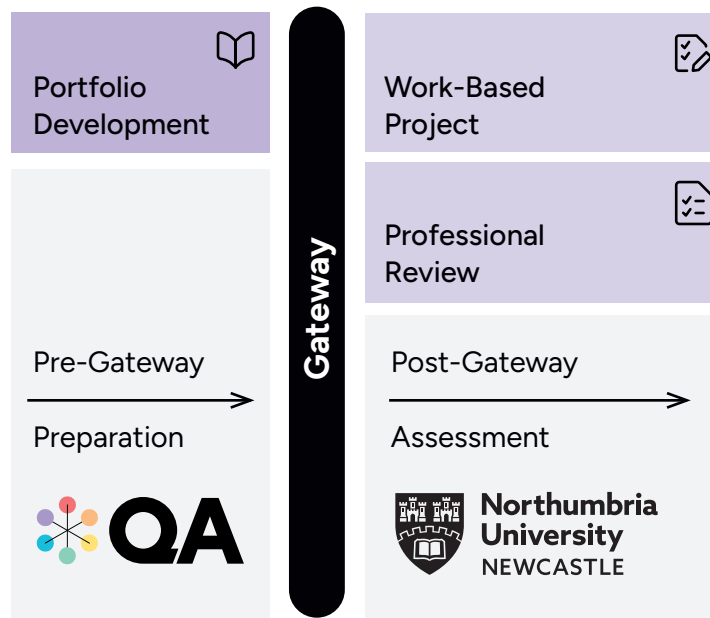
03

Behaviour

Exhibit professional workplace behaviour.

Explore the detailed assessment criteria withing the **Project Manager (Integrated Degree)**.

EPA process:



Work-Based Project: Complete a report on a workplace project, evaluating outcomes and demonstrating applied PM knowledge, skills, and behaviours.

Professional Review: Formal presentation and interview to demonstrate project management skills and real-world experience through a portfolio of evidence.



Ready to partner with us?

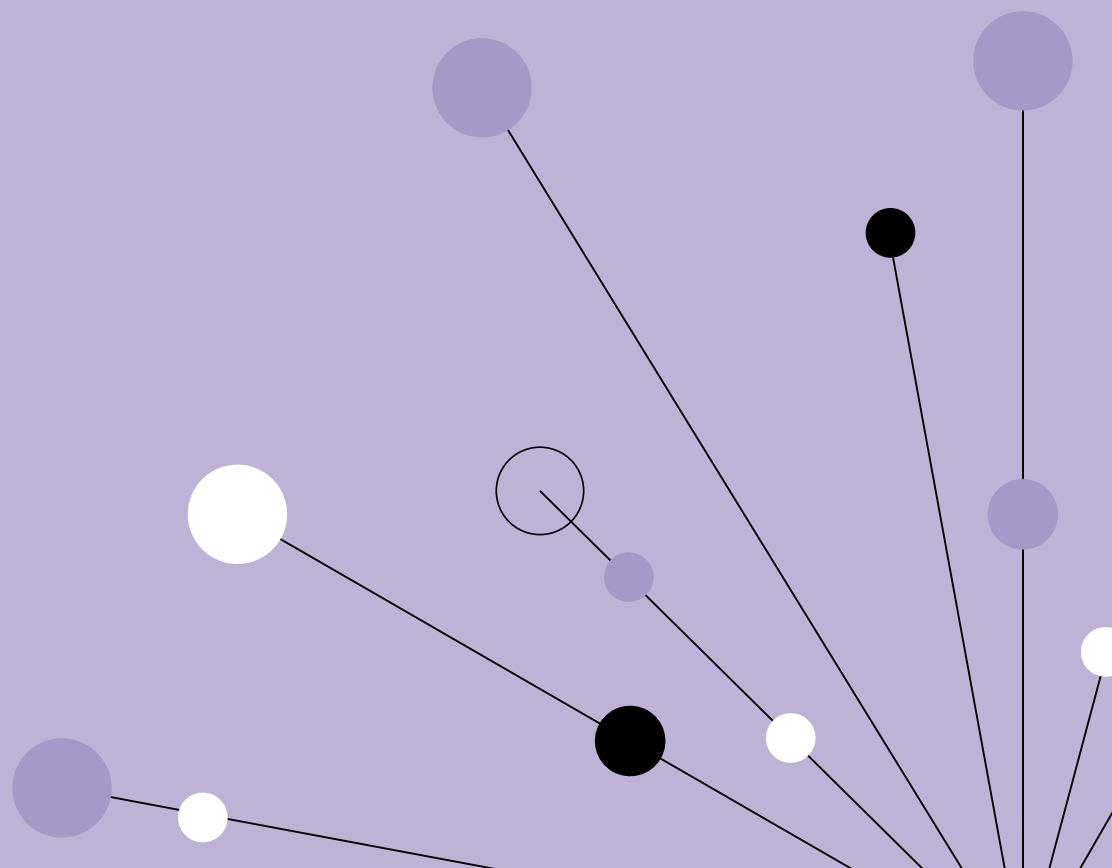
Let's talk:



0113 220 7150



qa.com/contact



Programme subject to validation.

© 2025 QA Limited or its affiliates. All rights reserved

V1.0 2025

Funded by

Department
for Education

